

地番	Xn	Yn	(Xn+1-Xn-1)Yn
KA138	-91398.572	16980.418	-84195.362604
KA147	-91397.393	16979.757	46075.144703
KA148	-91395.793	16979.816	118230.667896
KA149	-91390.262	16973.215	137872.575585
KA150	-91387.474	16969.671	85267.526966
KA151	-91385.116	16966.412	77216.046332
KA152	-91382.813	16963.449	81922.818754
KA153	-91380.170	16960.493	83249.598311
KA154	-91377.786	16958.174	76250.391270
KA155	-91375.569	16956.238	103459.931262
KA11	-91371.537	16952.596	160659.496776
KA10	-91365.859	16948.873	117645.938157
KA9	-91364.428	16948.105	41138.589030
KA8	-91363.373	16947.646	39399.945126
KA7	-91362.047	16947.224	39994.640408
KA6	-91360.956	16947.102	91704.039284
KA5	-91356.555	16947.273	111250.769106
KA4	-91354.234	16946.899	207100.987884
KA3	-91343.989	16944.902	177361.349440
KA2	-91343.514	16943.916	-210521.331100
KA17	-91356.714	16944.992	-310218.600000
KA16	-91362.264	16945.667	-148911.003000
KA15	-91365.714	16946.547	-90095.948415
KA14	-91367.709	16947.618	-65826.424404
KA13	-91369.692	16948.117	-92066.188754
KA12	-91373.211	16951.697	-9001.249781
K50	-91374.465	16951.077	-29576.774599
K51	-91375.058	16950.681	-257776.856575
K145	-91390.040	16940.685	313909.119930
KA19	-91396.080	16489.488	439296.449808
KA37	-91363.399	16486.142	-232273.254638
KA38	-91370.169	16481.751	-137754.474898
KA39	-91371.757	16480.281	-36100.295811
KA40	-91372.360	16480.200	-55653.635400
KA41	-91375.134	16477.632	-59962.102848
G39	-91375.999	16477.005	-27714.322410
G40	-91376.816	16478.237	68928.465371
G2	-91371.816	16481.553	314533.957452
G1	-91397.732	16490.895	141096.097620
G4	-91363.260	16499.228	-182415.484768
G5	-91368.788	16497.562	-18497.967910
G7	-91374.315	16515.895	-182583.912225
G9	-91379.843	16524.228	-182691.864768
G11	-91385.371	16532.562	-182767.472910
G13	-91390.898	16540.895	-70745.407915
W1	-91389.648	16541.724	265296.169512
G19	-91374.860	16551.533	262871.447106
G21	-91373.766	16552.359	-92328.500700
G22	-91380.438	16559.834	-174776.227950
G23	-91384.441	16564.378	-196735.117506
G27A	-91392.315	16573.315	-234197.914265
面積			344.450113
面積			172.2250565
地積			172.22

地番	Xn	Yn	(Xn+1-Xn-1)Yn
G53	-91456.760	16509.208	388725.811568
G52	-91441.426	16486.091	171191.968944
W5	-91446.376	16485.838	-240198.659660
W9	-91455.996	16479.717	-192664.371447
W8	-91458.067	16480.177	-69282.664108
HMKA147	-91460.200	16483.528	-52022.014368
KA18	-91461.223	16485.079	-150277.980164
KA128	-91469.316	16498.243	-147527.288906
KA171	-91470.165	16499.559	-151696.945446
KA55	-91478.510	16512.511	58091.013698
KA56	-91466.647	16520.479	223654.244702
G136	-91464.972	16521.589	163348.950443
面積			1341.685256
面積			670.8326280
地積			670.83

地番	Xn	Yn	(Xn+1-Xn-1)Yn
G137	-91468.014	16526.175	78482.805075
G136	-91464.972	16521.589	22585.012163
KA55	-91466.647	16520.479	-78455.754771
KA57	-91469.721	16523.045	-22589.736515
面積			22.3259552
面積			11.1629760
地積			11.16

点名	X座標	Y座標
T17	-91392.045	16387.403
T1	-91395.183	16444.221
T20	-91216.927	16504.721
T2	-91236.318	16560.650
T5	-91266.191	16507.379
T3	-91289.918	16537.831
T6	-91367.049	16946.807
T7	-91398.257	16922.538
T12	-91422.714	16922.135
T8	-91427.698	16630.949
T9	-91496.741	16601.293
T10	-91521.147	16567.017
T11	-91494.812	16529.863
T13	-91462.726	16478.765
T14	-91404.850	16475.901
T15	-91363.240	16484.565
T16	-91322.721	16449.869
T4	-91309.126	16497.935

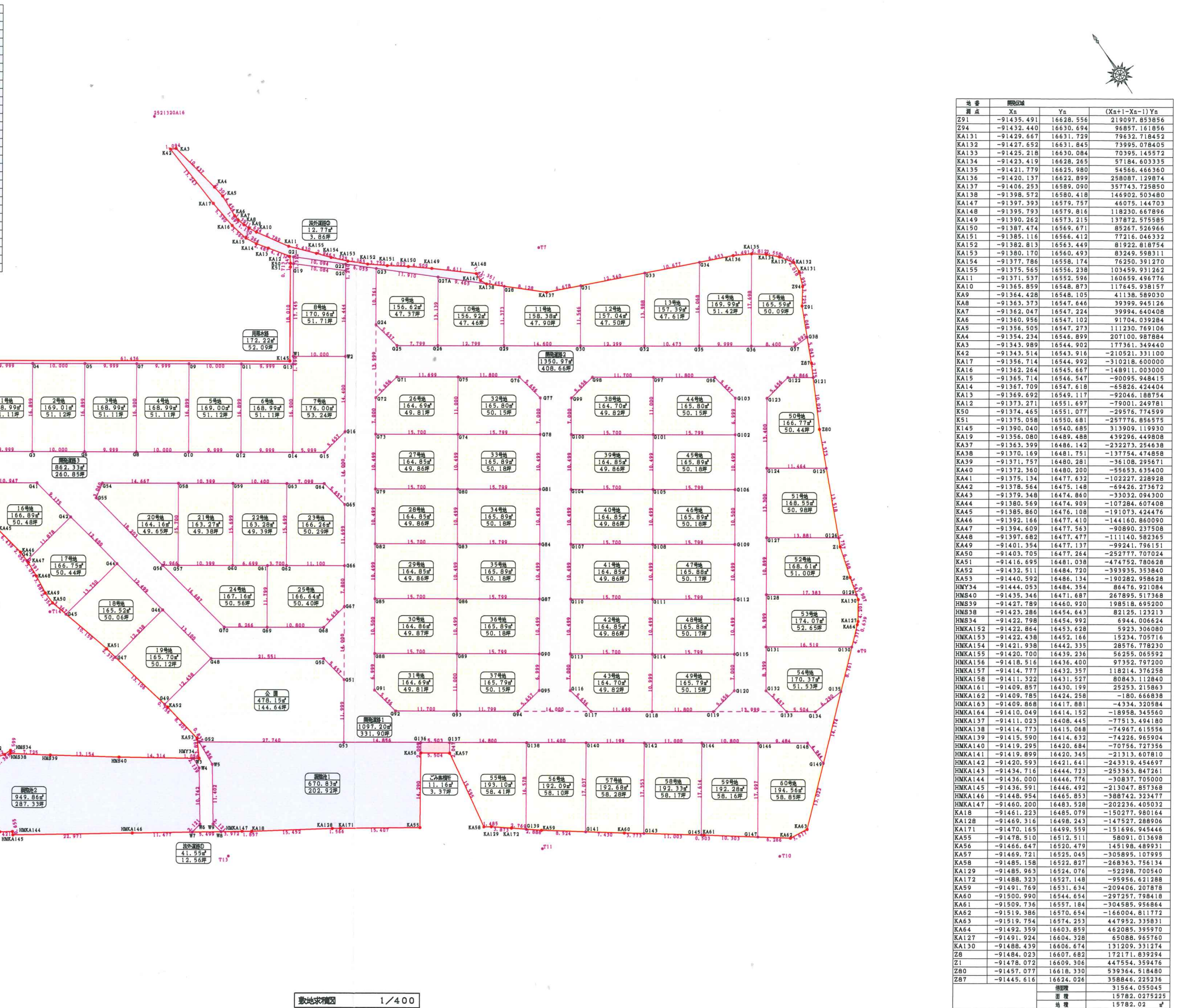
地番	Xn	Yn	(Xn+1-Xn-1)Yn
W3	-91443.454	16483.484	168873.293580
HM540	-91435.346	16471.687	258028.976855
HM539	-91427.789	16460.920	198518.695200
HM538	-91423.286	16454.643	82125.123213
HM534	-91422.798	16454.992	6944.006624
HMKA152	-91422.864	16453.628	5923.305080
HMKA153	-91422.438	16452.166	15234.705716
HMKA154	-91421.938	16442.335	28576.778230
HMKA155	-91420.700	16439.236	56255.065592
HMKA156	-91418.516	16436.400	97352.797200
HMKA157	-91414.777	16432.357	118214.376258
HMKA158	-91411.322	16431.527	80843.112840
HMKA161	-91409.857	16430.199	25253.215863
HMKA162	-91409.785	16424.258	-180.666838
HMKA163	-91409.868	16417.881	-81892.390428
HMKA138	-91414.773	16415.068	-93927.019096
HMKA139	-91415.590	16414.632	-74226.965904
HMKA140	-91419.399	16420.684	-70756.727356
HMKA141	-91419.899	16420.345	-21313.607810
HMKA142	-91420.593	16421.641	-243319.454697
HMKA143	-91434.716	16444.723	-253363.847261
HMKA144	-91436.000	16446.776	-30837.705000
HMKA145	-91436.591	16446.492	-213047.857368
HMKA146	-91448.954	16465.853	-305013.460972
W7	-91455.715	16475.537	-93910.560900
W4	-91445.591	16483.375	184413.800000
面積			1899.728213
面積			949.8641065
地積			949.86

地番	Xn	Yn	(Xn+1-Xn-1)Yn
G53	-91456.760	16509.208	388725.811568
G52	-91441.426	16486.091	171191.968944
W5	-91446.376	16485.838	-240198.659660
W9	-91455.996	16479.717	-192664.371447
W8	-91458.067	16480.177	-69282.664108
HMKA147	-91460.200	16483.528	-52022.014368
KA18	-91461.223	16485.079	-150277.980164
KA128	-91469.316	16498.243	-147527.288906
KA171	-91470.165	16499.559	-151696.945446
KA55	-91478.510	16512.511	58091.013698
KA56	-91466.647	16520.479	223654.244702
G136	-91464.972	16521.589	163348.950443
面積			1341.685256
面積			670.8326280
地積			670.83

地番	Xn	Yn	(Xn+1-Xn-1)Yn
G137	-91468.014	16526.175	78482.805075
G136	-91464.972	16521.589	22585.012163
KA55	-91466.647	16520.479	-78455.754771
KA57	-91469.721	16523.045	-22589.736515
面積			22.3259552
面積			11.1629760
地積			11.16

地番	Xn	Yn	(Xn+1-Xn-1)Yn
G137	-91468.014	16526.175	78482.805075
G136	-91464.972	16521.589	22585.012163
KA55	-91466.647	16520.479	-78455.754771
KA57	-91469.721	16523.045	-22589.736515
面積			22.3259552
面積			11.1629760
地積			11.16

点名	X座標	Y座標
T17	-91392.045	16387.403
T1	-91395.183	16444.221
T20	-91216.927	16504.721
T2	-91236.318	16560.650
T5	-91266.191	16507.379
T3	-91289.918	16537.831
T6	-91367.049	16946.807
T7	-91398.257	16922.538
T12	-91422.714	16922.135
T8	-91427.698	16630.949
T9	-91496.741	16601.293
T10	-91521.147	16567.017
T11	-91494.812	16529.863
T13	-91462.726	16478.765
T14	-91404.850	16475.901
T15	-91363.240	16484.565
T16	-91322.721	16449.869
T4	-91309.126	16497.935



敷地求積図 1/400



株式会社 北村総合設計事務所
 一級建築士事務所 滋賀県知事登録(イ)第2525号
 一級建築士 大臣登録第-291457-号 北村 建

〒521-1222
 滋賀県東近江市佐野町475-22番地
 Tel: 0748-42-9557
 Fax: 0748-42-9587

TITLE	佐野町分譲宅地開発計画【Ⅱ期】	設計図	DATE		C
	敷地求積図	SCALE	1/400	R 年 月 日	17
検印		担当		担当	

